



C.P.A. S.R.L.

CHAMBORD LADDER



C.P.A. srl

Via Don Demetrio Castelli, 71 - 12060 RODDI (CN)
Tel. 0173.615693 - Fax 0173.620922

www.cpa-piscine.it
cpa@cpa-piscine.it

Ver.03 - 2020-07-16

Technical features

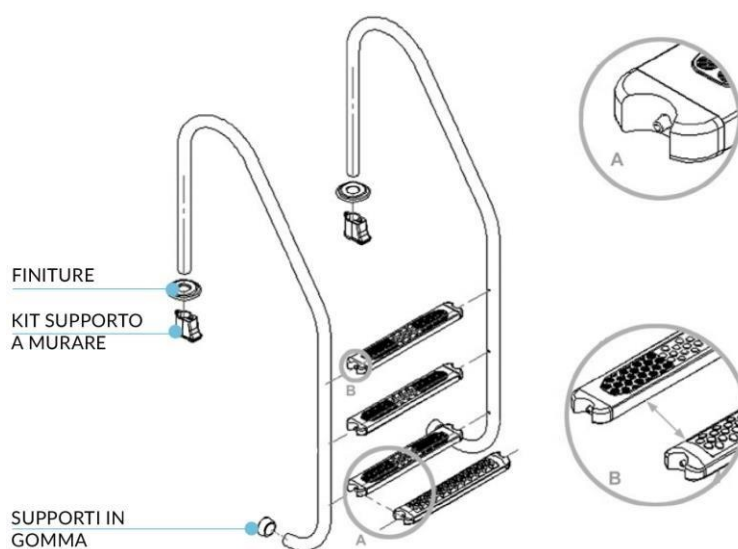


316 stainless steel stairs manufactured in 316 stainless steel Ø43 mm tube. The steps are made of stainless steel. The stairs are delivered with wells to be walled up. Complete with all accessories for installation.

Models available with pit to be walled in 316

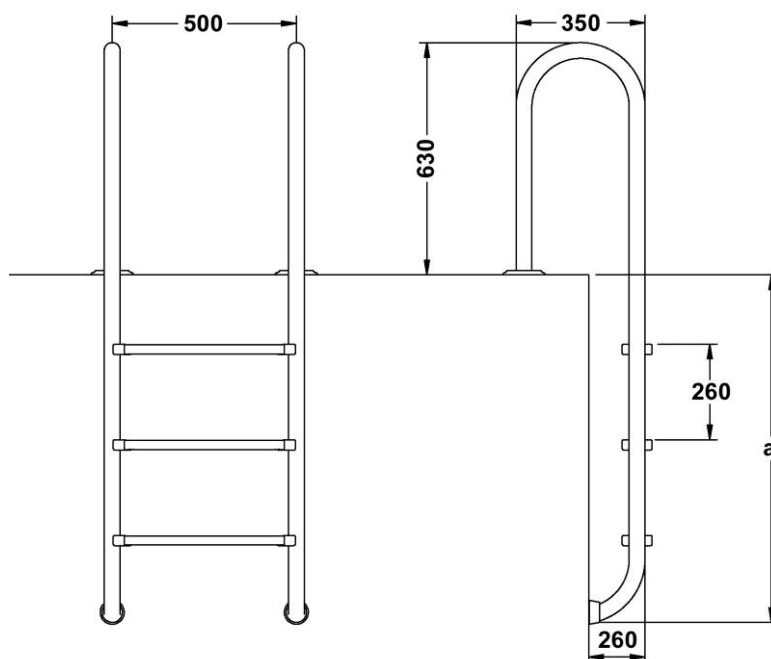
Code	Description	Kg
1025026	Scala Chambord ladder with 2 INOX steps	10,00
1025028	Scala Chambord ladder with 3 INOX steps	11,80
1025030	Scala Chambord ladder with 4 INOX steps	13,20
1025032	Scala Chambord ladder with 5 INOX steps	14,00

Assembly Diagram



Technical Scheme

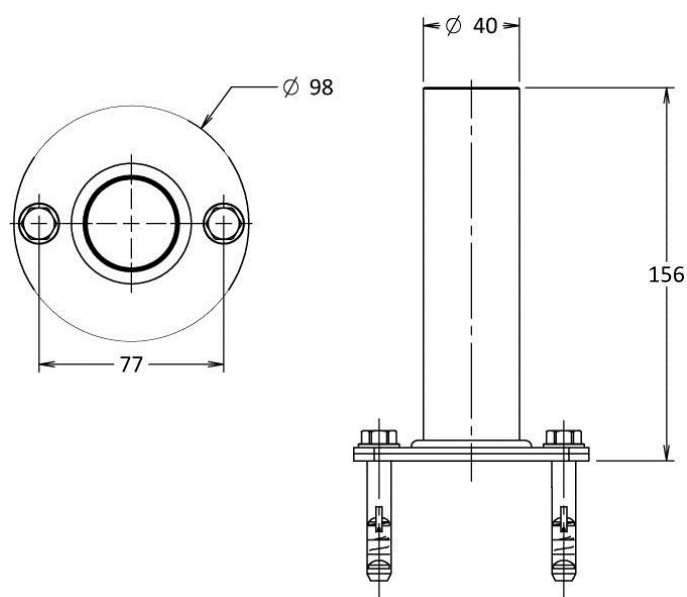
Code	(a) mm
1025026	696
1025028	946
1025030	1196
1025032	1446



Fixing option with doweled plate

Joint for $\varnothing 43$ mm stair tube, with flanges, in 304 stainless steel.

Code
1025044



Note

- The information contained in this document may vary at the discretion of the editor, without notice, together with the changes to the product in question in this document: it will be the responsibility of the customer to verify the persistent correspondence of the product to the information sheet when placing the order.
- Any technical diagrams reproduced in this document have a purely informative value and are not valid for regulatory purposes