

DATA SHEET



C.P.A. S.R.L.

SEQUENCE OF LAYING ACRYLIC RESIN STAIRS



C.P.A. srl

Via Don Demetrio Castelli, 71 - 12060 RODDI (CN)
Tel. 0173.615693 - Fax 0173.620922

www.cpa-piscine.it
cpa@cpa-piscine.it

Ver.04 - 14/06/17

Introduction

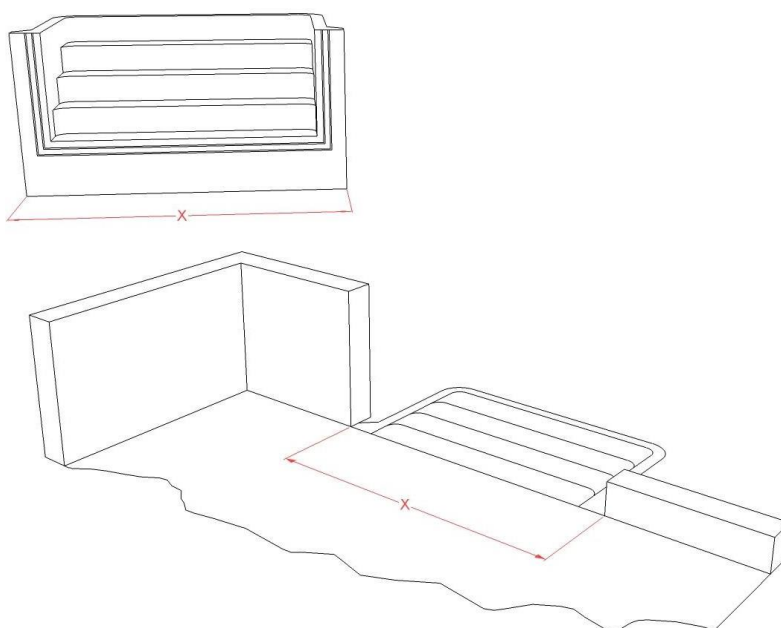
Below are the essential steps for a correct installation of the prefabricated GRP stairs.

This procedure assumes that a suitable base has already been created to support the walls of the tank and the staircase itself. It is advisable to create a support base, by means of a lean concrete cleaning jet, in the area behind the place where the GRP staircase is housed.

The installation of the ladder can take place simultaneously with the construction of the walls of the tank or once they have been cast.

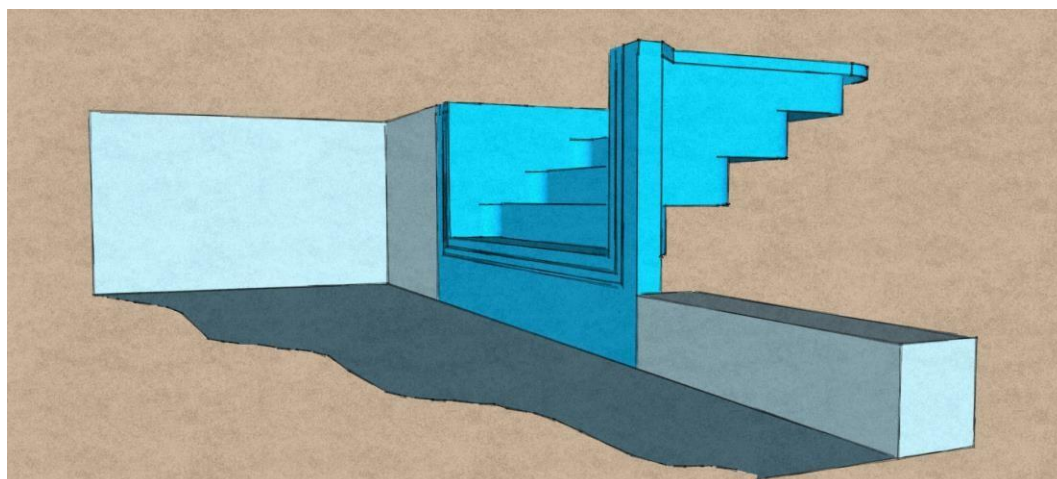
Preparation of housing

First of all, during the construction phases of the pool walls, the cavity that will house the staircase must be prepared: this opening must respect the dimensions of the prefabricated module. Remember that the tolerance gap between the compartment and the fiberglass structure must be reduced to a minimum. Any linearity imperfections of the walls can be corrected later by injecting polyurethane foam at the time of finishing.



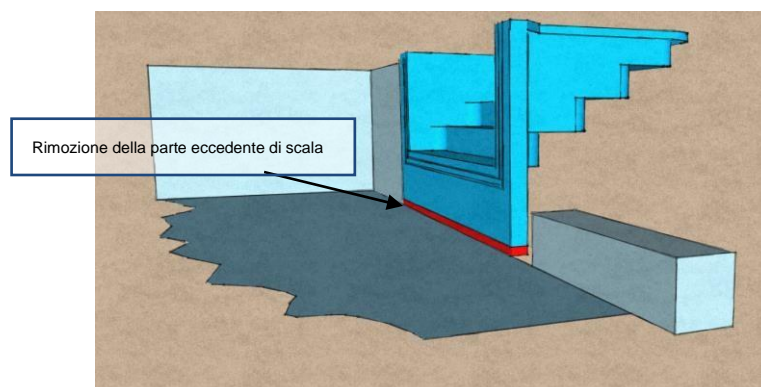
Laying of the stairs

The stair body will be presented in the prepared compartment, this operation requires that it be propped up at the rear in order to keep it in position during casting operations.

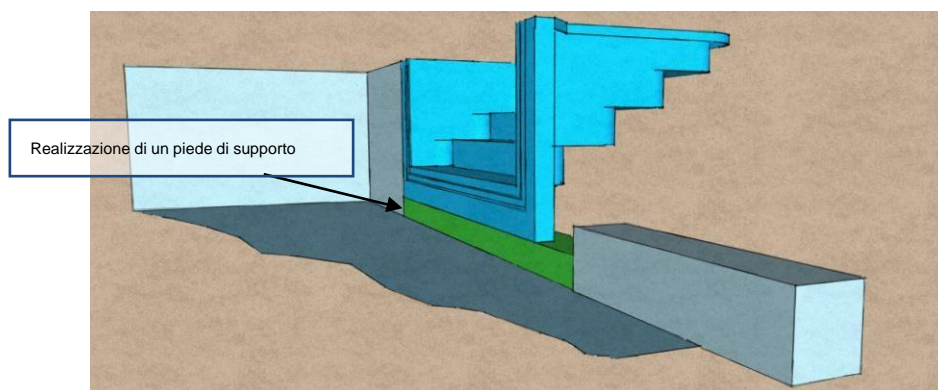


First, it will be necessary to check that the relative height of the staircase with respect to the finished edge of the walls: if there is a gap between the two parts, an adjustment must be made so that they coincide:

- in the event that the ladder exceeds the height of the pool walls, the excess portion must be eliminated by trimming the lower edge of the ladder, so as to equalize the dimensions;



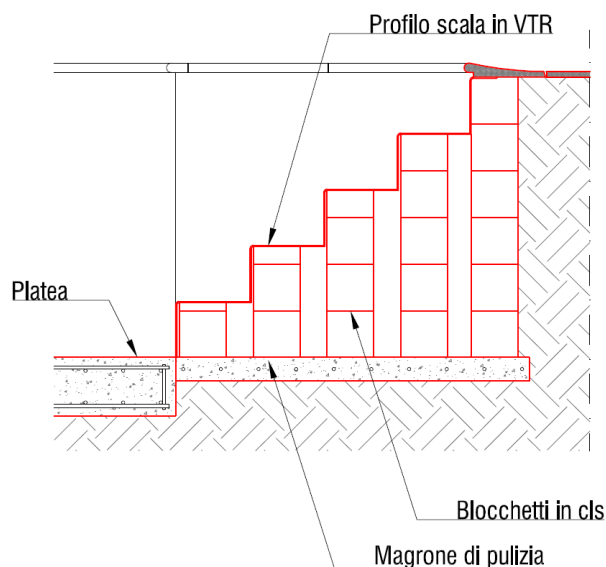
- on the contrary, in the case of a lower height of the staircase, it will be advisable to create a support foot, flush inside the pool, to compensate for the missing centimeters.



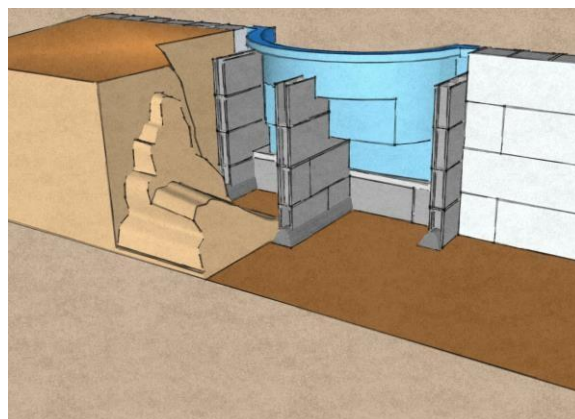
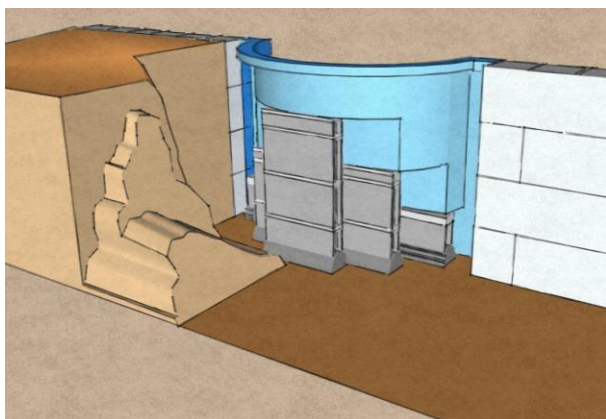
Next, the coplanarity of the surfaces of the stairs with the side walls will be checked. Temporarily, the ladder will be fixed in the correct position with the aid of temporary rear props.

Once the position has been basted, physically fix the staircase to the walls by means of anchors that bind the head of the side wing of the staircase to the head of the walls, so as to fix its position.





After this operation, it is recommended to create rear supports using bricks or concrete blocks. The rear pillar will have the function of bracing the structure and guaranteeing its stability even in the case of unstable backfill.



Welding examples

Once the structure has been stabilized, it is possible to check for correct positioning by filling any discontinuities along the edge of the staircase between it and the walls by means of the injection of polyurethane foam. When the foam is dry, the surplus will be trimmed by cutting with a smooth blade.

2. Laying of membrane



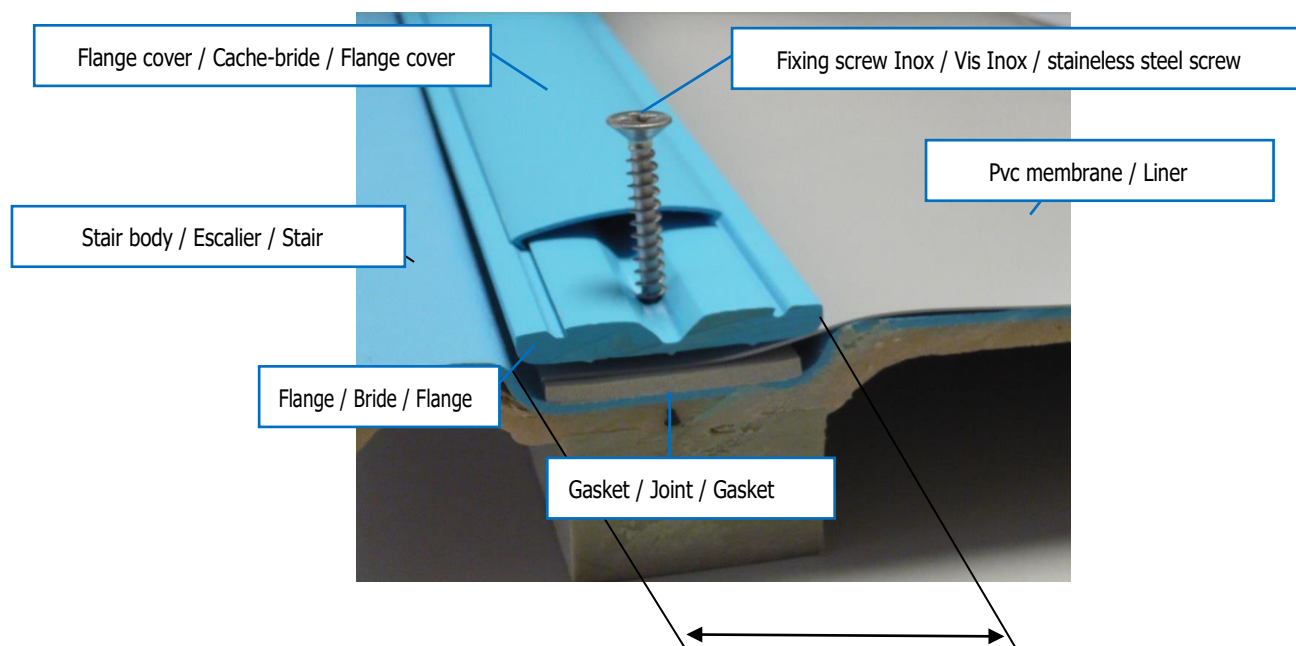
Once the structural set-up operations described above have been completed, we will proceed with the laying of the sheet: this will be made to overcome the structural junction points and fixed to the staircase by means of special sheet retaining guides, to be mechanically fixed to the fiberglass structure.

Then, after fixing, the excess parts of the sheet will be removed, freeing the entrance to the staircase.

For a better tensioning of the sheet, we suggest the use of a temporary sheet stop guide, to be used as a temporary grip for tensioning the cloth in the hollow part of the staircase (see figure).

3. Section detail of the fixing of the PVC Liner / Mantle

Vue en coupe / Sectional view



Flange width / Largeur bride / flange width = 4.5 cm

Width of cover flange / Largeur cache-bride / width cover flange = 3.5 cm



Check and fill the tank

At the end of the laying phases of the sheet, a final check of the work carried out will be carried out and then it will be possible to proceed with the re-burial of the structure, and then proceed to fill the tank once the operations of setting up the accessories to wall in the pool are finished..

Note

- The information contained in this document may vary at the discretion of the editor, without notice, together with the changes to the product in question in this document: it will be the responsibility of the customer to verify the persistent correspondence of the product to the information sheet when placing the order.
- Any technical diagrams reproduced in this document have a purely informative value and are not valid for regulatory purposes