



C.P.A. S.R.L.

PROFESSIONAL SAUNAS INSTALLATION MANUAL



PREPARATION FOR LAYING

When opening the kit, make sure that the listed materials are present inside:

1. Wooden parts for the walls, roof, floor, benches, glass or wooden door, support beams, stove covers, lamp covers, frames.
2. 5 x 80 cross type fixing screws
3. 5 x 70 cross type fixing screws
4. 5 x 90 cross type fixing screws
5. 5 x 100 cross type fixing screws
6. Fixing screws 3 x 40 type AW
7. Pre-formed wall connection bars
8. Beads for closing parts of the walls
9. Wall assembly bases
10. Internal and external frames for covering walls / roof
11. Crosspieces for supporting the benches
12. Benches
13. Hinges for door assembly (glass or wood)
14. Click to close the door
15. Shaped wood stove cover
16. Thermo hygrometer
17. Hourglass
18. Bucket
19. Ladle
20. Ceiling lamp with wooden lamp cover and fixing screws
21. Incandescent bulb type 40 W, E27 socket
22. Headrest in preformed wood
23. Cable for connecting the lamp
24. Cable for connecting the stove
25. Stove for heat management
26. Peridotite stones for the stove
27. Electronic control unit for stove management
28. Electronic control unit connection c

TOOLS REQUIRED FOR ASSEMBLING THE KIT

Screwdrivers

Star insert type AW / 165.823.040 0.5 kg rubber hammer

2 m roll-up meter

Level for wall positioning Drill

Wood glue

First of all, unpack the assembly kit, place the parts to be assembled and check if the package contains all the accessories relating to the assembly of the sauna..

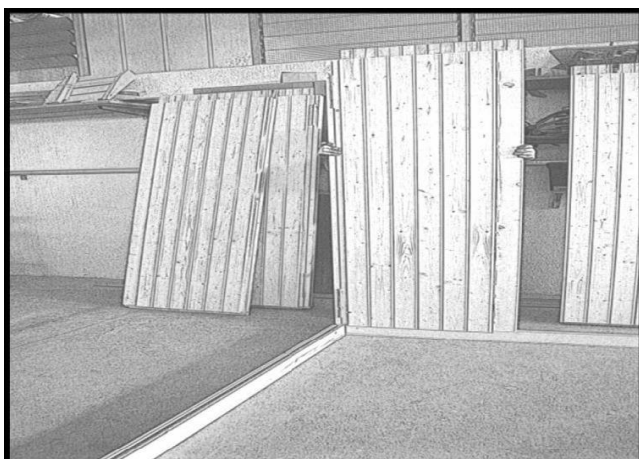
1. SAUNA MOUNTING



(Fig.1)

STEP 01

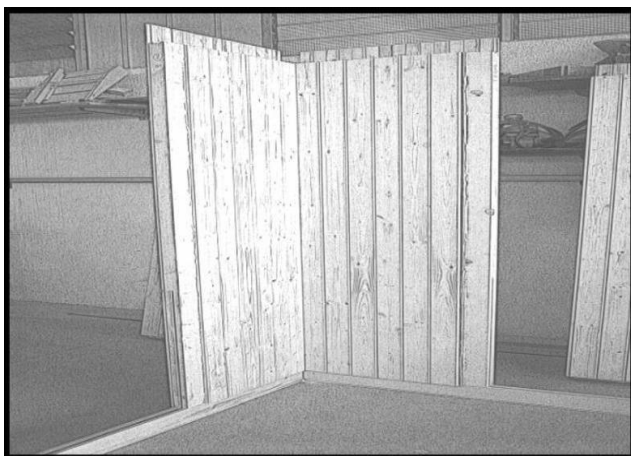
Lay the wall assembly bases (Fig. 1).



(Fig. 2)

STEP 02

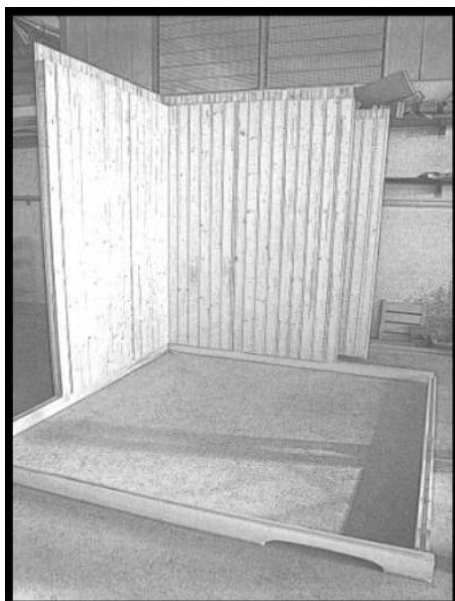
Place the wall of the backrest in the joint of the base (Fig.2).



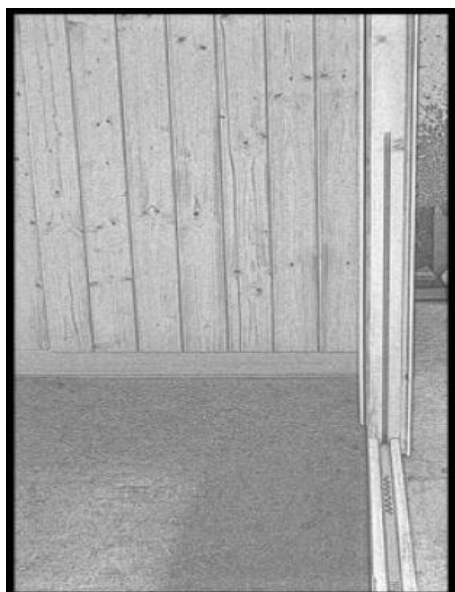
(Fig. 3)

STEP 03

Place the back side in the base and join it at 90 ° with the backrest. Secure with 6 screws 5 x 90 ° (Fig. 3).



(Fig. 4A)



(Fig. 4B)



(Fig. 4B)

STEP 04

Proceed to assemble the other walls following the numbers placed on them. Position all the walls forming a continuity between them (Fig. 4A; Fig. 4B; Fig. 4C).



(Fig. 5)

STEP 05

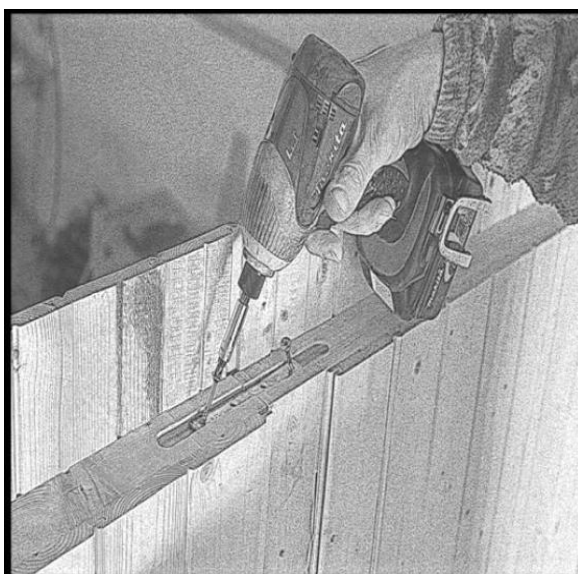
Securely fix the walls to each other inside using the 5x70 screws (Fig. 5).



(Fig. 6)

STEP 06

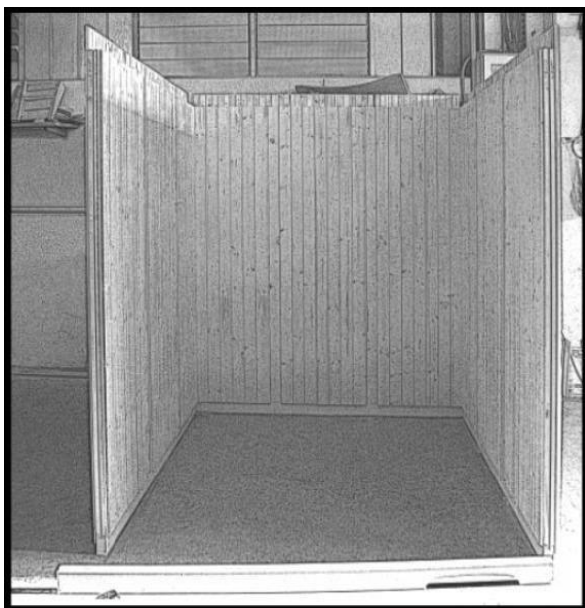
Fissare bene gli angoli esterni formati dalle pareti usando le viti 5x90 (Fig. 6).



(Fig. 7)

STEP 07

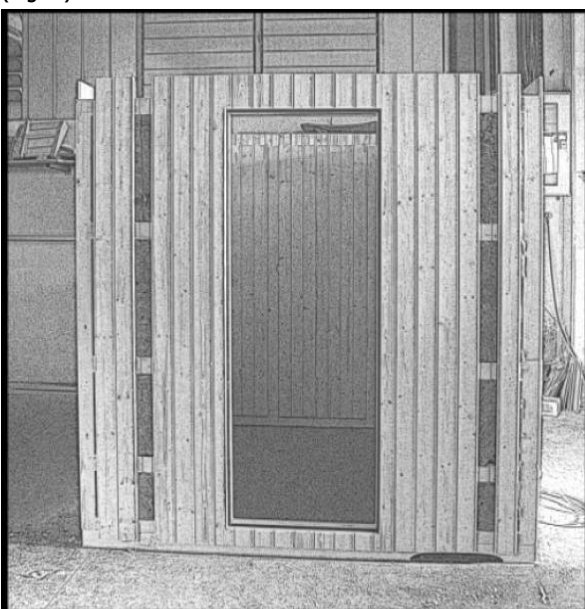
Fissare di testa le pareti con le sbarrette di collegamento pareti inserendole nelle apposite fessure. Usare le viti 5 x 70 (Fig. 7).



(Fig. 8)

STEP 08

Once the backrest and sides are finished, proceed to assemble the front of your sauna (Fig. 8).



(Fig. 9)

STEP 09

Proceed to assemble the front, the door should be positioned according to the model you requested (Fig. 9).



(Fig. 10)

STEP 10

After making sure that all the walls are fixed well and all the wall connection bars are screwed, proceed to position the roof (Fig. 10).



(Fig. 11)

STEP 11

Fasten the roof to the walls using 5x100 screws (Fig. 11).



(Fig. 12)

STEP 12

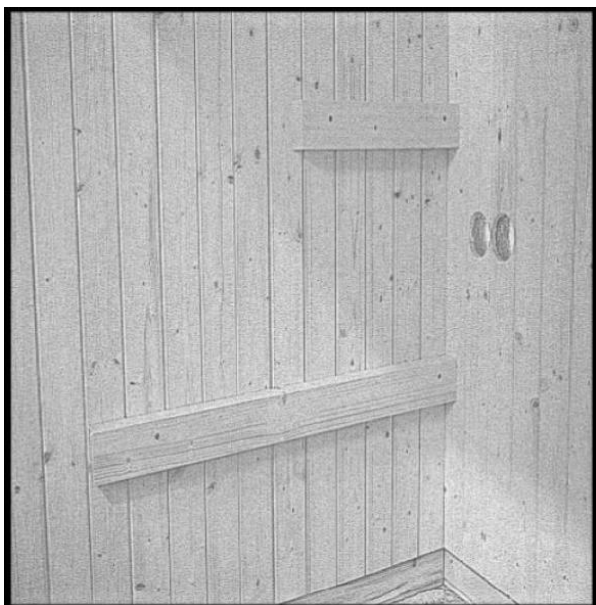
Proceed to insert the joining beads inside and outside the sauna, fixing them with 3 x 40 screws (Fig. 12).



(Fig. 13)

STEP 13

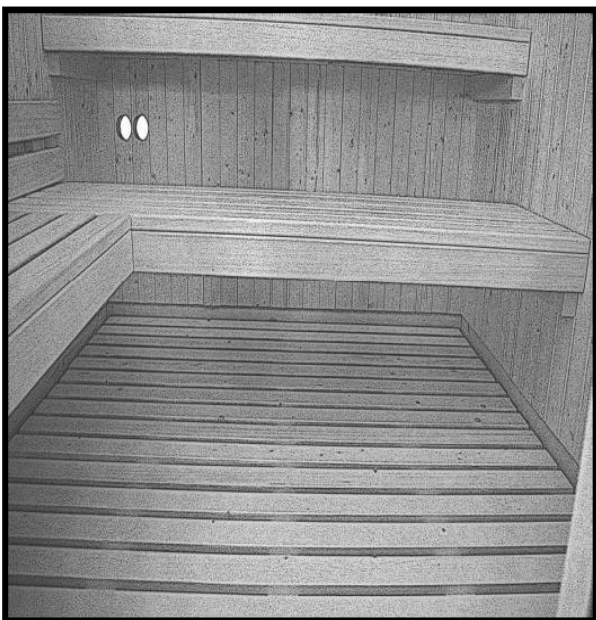
Insert the cables into the appropriate slots and then cover everything with the joining beads (Fig. 13).



(Fig. 14)

STEP 14

Attach the bench supports to the walls with at least 5 screws 5 x 80 for each support and wood glue (Fig. 14).

**STEP 15**

Place the benches on top of the supports and insert the floor (Fig. 15).

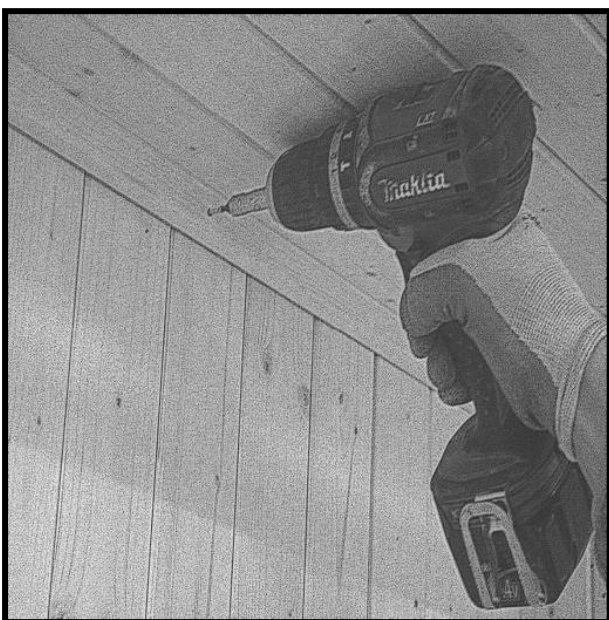
(Fig. 15)



(Fig. 16)

STEP 16

Fissare il riparo della stufa (Fig. 16).



(Fig. 17)

STEP 17

Fissare le cornici di rifinitura con le viti 3 x 4 (Fig. 17).

WE RECOMMEND THE USE OF THE CONNECTION SCREWS ATTACHED TO THE MOUNTING KIT. TIGHTEN THE SCREWS CAREFULLY DURING THE ASSEMBLY OF THE VERTICAL WALLS AND THE CEILING; IN PARTICULAR, FIX THE BENCH SUPPORTS WITH 5 SCREWS AND WOOD GLUE.

Electrical wiring of the sauna

It is necessary to bring the power supply line of the sauna to the roof of the same.

The assembly of electrical equipment must be done by specialized personnel, able to issue the declaration of conformity according to Ministerial Decree 37/08.

Note

- The information contained in this document may vary at the discretion of the editor, without notice, together with the changes to the product in question in this document: it will be the responsibility of the customer to verify the persistent correspondence of the product to the information sheet when placing the order.
- · Any technical diagrams reproduced in this document have a purely informative value and are not valid for regulatory purposes