



C.P.A. S.R.L.

## UVC TIMER LAMPS



C.P.A. srl

Via Don Demetrio Castelli, 71 - 12060 RODDI (CN)  
Tel. 0173.615693 - Fax 0173.620922

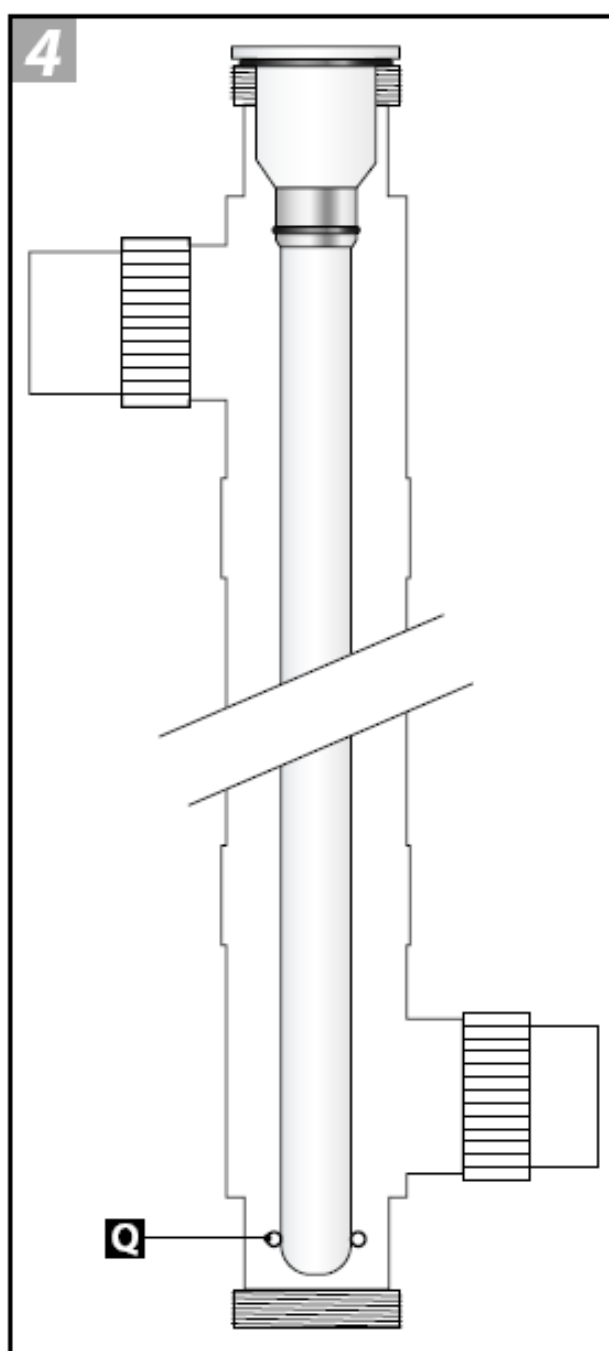
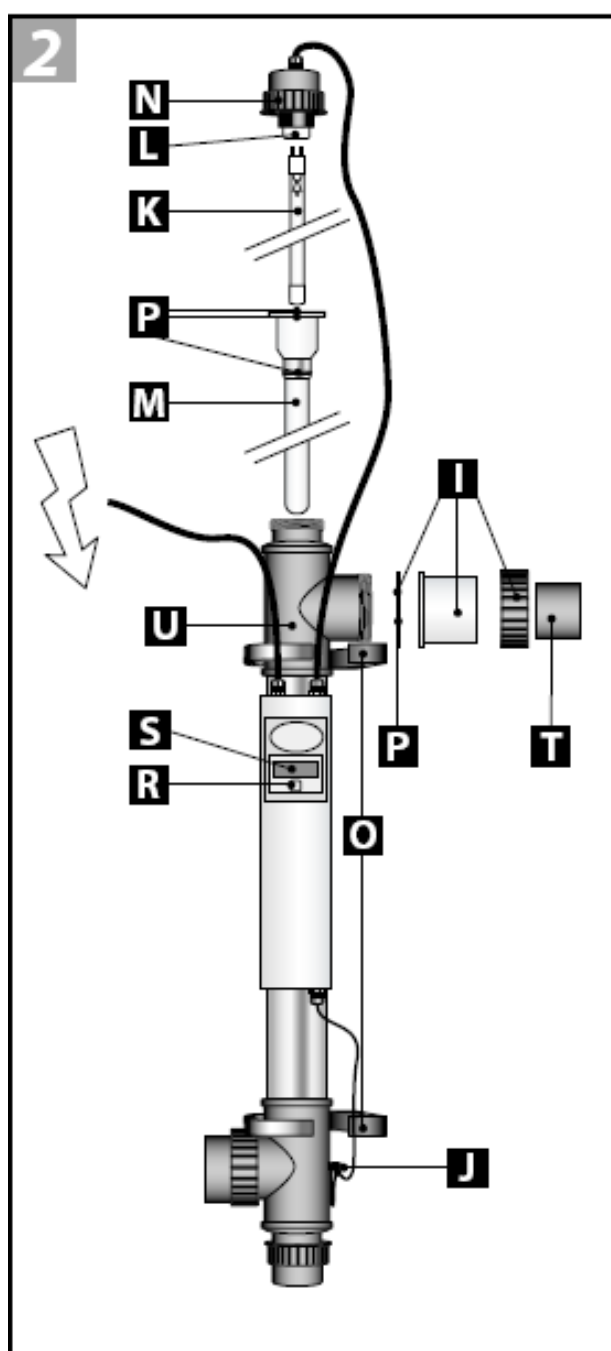
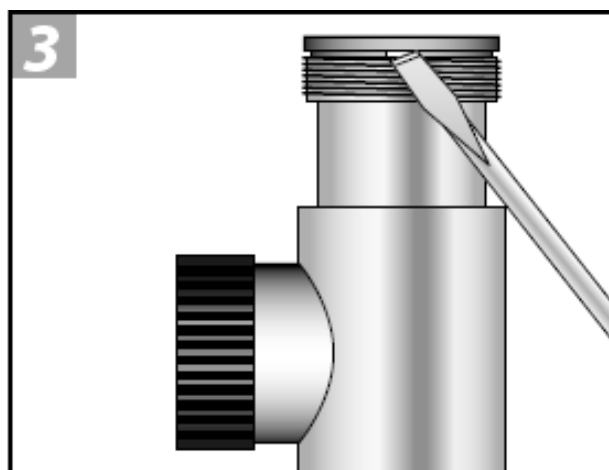
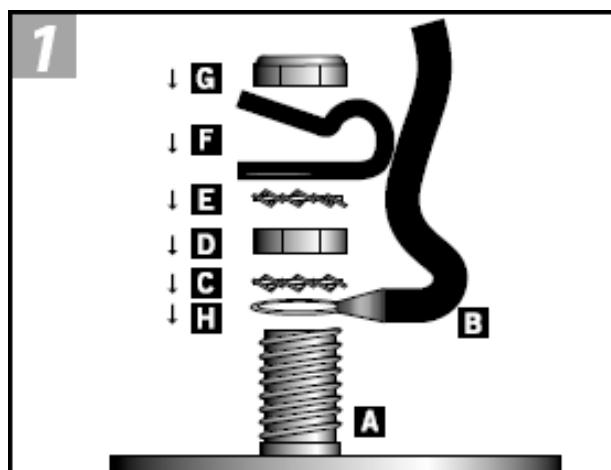
[www.cpa-piscine.it](http://www.cpa-piscine.it)  
[cpa@cpa-piscine.it](mailto:cpa@cpa-piscine.it)

Ver.00 - 01/06/18

**INDEX**

1.	Technical assembly drawing - cod. 1075096	pag. 03
2.	UVC Timer 75 W sterilizer - cod. 1075096	pag. 04
3.	Technical assembly exploded view - cod. 1075097	pag. 09
4.	UVC Timer 130 W sterilizer – cod. 1075097	pag. 10

## 1. Technical assembly exploded view - cod. 1075096



## 2. Sterilizzatore UVC Timer 75 W - cod. 1075096

### Functioning

The UV-C Timer device generates UV-C rays with a wavelength of 253.7 nm thanks to the special Philips UV lamp, which eliminates bacteria (including legionella). The UV-C Timer device ensures clean, fresh and transparent water in an efficient and ecological way. The water is transported through the UV-C device by means of a pump. UV-C radiation neutralizes bacteria, viruses and other primitive organisms, and stops them from multiplying. The UV-C Timer device is equipped with an integrated high-frequency electronic ballast. This ballast absorbs current variations, thus protecting the lamp.

The device also includes an integrated hour meter, to maintain an accurate count of the hours of operation. It lets you know exactly when the lamp needs to be replaced. The stainless steel interior provides an additional reflection of radiation

UV-C, increasing the efficiency of the device by up to 35%. Thanks to the UV-C timer, the water will be disinfected safely and efficiently, while maintaining excellent quality.

### Advantages of UV-C treatment:

- Keeps the water fresh, clean and transparent
- Disinfects water efficiently and safely
- UV-C rays break down chlorinated compounds
- Protects from bacterial strains when taking a bath
- Keeps the formation of mold, bacteria and algae under control
- It allows you to reduce the use of chlorine and other chemicals by up to 80%
- Prevents the smell of chlorine and irritation to the skin and eyes (redness)
- More ecological than traditional methods

### Advantages of the UV-C timer:

- Integrated electronic pre-activation device, for a uniform feeding.
- Up to 35% more UV-C yield thanks to reflection
- Equipped with a Philips UV-C lamp for 9000 hours of operation
- Integrated adjustable hour meter for the UV-C lamp
- Digital indication of when the lamp needs to be replaced
- 316L stainless steel housing
- Ease of installation and maintenance
- 2 year warranty on manufacturing defects
- Ground connection
- Adapters from 63 to 50 mm in diameter supplied

### Safety

*This appliance produces harmful rays. Direct contact can pose a risk to eyes and skin. Therefore, check the operation of the UV-C lamp exclusively through the transparent components of the unit*

- Before carrying out maintenance or repairs on the appliance, always remove the plug from the socket. Never insert or remove the plug from the socket with wet hands or when you are in a puddle.
- Keep the appliance and the cable out of the reach of children.
- The cord of this appliance cannot be replaced. In the event of damage to the power cable, the complete electrical part of the appliance must be replaced. Never discard the plug, but leave the electrical section intact. The electrical section with the cut off plug is not covered by warranty.
- Never install the appliance in an area in full sun.
- When the lamp is on, the unit must always be crossed by water.

- After the device is turned off, the lamp remains hot for about 10 minutes.
- Do not use the appliance in case of damage to components (in particular to the quartz glass).
- If there is a risk of frost in the winter months, disassemble the appliance.
- The stainless steel housing of the appliance is not suitable for salt pools with a high salt content. If the salt content is excessive, the steel oxidizes and the housing is damaged.
- This product must only be used in accordance with the guidelines given in this manual.

#### **Ground Connection Installation (Illustration 1)**

1. Before mounting the plastic strain relief (F) on the grounding bolt (A), the cable (B) must be passed through the strain relief (F). Mount the anti-traction device (F) about 10 cm away from the eyelet (H) of the ground connection cable (B).
2. Arrange the eyelet (H) of the cable (B) on the ground connection bolt (A) fixed to the housing.
3. Then mount a toothed washer (C), a hex nut (D) and another toothed washer (E) on the eye (H).
4. Fix the anti-traction device (F) on it in order to create a slot of 5 cm in diameter.
5. Finally, mount the lock nut (G) on the grounding bolt (A).
6. After having mounted the various nuts in the right order on the ground connection bolt (A), tighten them with an Allen key or hexagonal head number 8. Do not overtighten the nuts, as the anti-traction device can break. (The clear nut screwed onto the grounding bolt (A) has no function and can be thrown away).

#### **Installing the appliance (Drawing 2)**

Never install the UV-C Timer directly downstream of the pH regulator or the pool salt electrolysis system.

The best place to install the appliance is directly downstream of the filter. Never immerse this appliance in water. Always install the appliance outside the tank. When the lamp is on, the unit must always be crossed by water.

1. Establish the desired position for installing the appliance. Make sure there is enough space (+/- 1m) to disassemble the lamp (K) / quartz glass (M) for replacement and / or maintenance.
2. Mount the supplied clamps (O) in a defined point, fix the unit to the pipe clamps and tighten the tripartite joint (I). Pay attention to the position of the gaskets (P) both at the connections and at the quartz glass (see drawing 2).
3. Mount the unit using the tripartite joints (I) in the circuit. The entrance and exit of the tripartite joint have a diameter of 63 mm. If the pipes have a diameter of less than 63 mm, the adapter (Ø 63 x Ø 50 mm) (T) can be used. It must be glued on the tripartite joint (I). Inside the adapter (T) there is on one side a thread that allows you to mount any sleeve with sealing gasket (not supplied). For adapter sets, please contact your dealer.
4. Unscrew the threaded gasket (N) from the housing (U). Extract the UV-C (K) lamp from the enclosure supplied (see packaging) and gently insert the lamp into the quartz glass (M). Gently connect the white lamp holder (L) to the UV-C lamp (K), then manually screw the threaded gasket (N) onto the housing (U).
5. Operate the pump and check that the system does not have leaks and that the water flows without obstacles.
6. Insert the plug of the UV-C device into a wall socket with earth connection and equipped with an earth leakage switch.

Check that the lamp is on through the transparent components of the luminaire. To deactivate the appliance, remove the plug from the socket.

**Istruzioni per l'uso del contatore digitale**

When the UV-C Timer is activated, the program automatically performs a test. The display automatically shows the following indications: 8888 (test display); r and software version number; 50H or 60H mains frequency indication. At this point, the display switches to hour counter mode.

If the UV-C lamp is activated for the first time, or after using the "reset" function, the display shows the value 4500. Next to the rightmost digit on the display, a dot flashes once per second to indicate that the hour meter is running.

The display is automatically set to the factory set value of 4500 hours. Up to 4500 hours, the UV-C lamp provides 100% radiation effectiveness. After 4500 the radiation becomes less intense and may be insufficient for the desired result.

If the UV-C lamp has been in use for a long time and has already been activated previously, after activation, the display shows the value indicated before deactivating the UV-C lamp. If the hour meter value has been increased or reduced by the user, the last hour meter position indicated on the display before deactivation is displayed.

If desired, the hour counter settings can be changed. To do this, proceed as follows:

After holding the switch (R) under the display for 5 seconds, the word "rSt" appears on it, indicating that the user menu has been selected. After releasing the switch (R), the position of the hour counter and the word "rSt" alternate on the display. By briefly pressing the switch, the possibilities offered by the menu are displayed. The menu offers 3 adjustment possibilities: "rSt" "UP" and "dn".

- "rSt" means reset: it is happy to restore the hour counter to the factory setting of 4500 hours. This choice is confirmed by the fact that the position of the hour counter and the message "rSt" alternate on the display. By keeping the switch (R) pressed for 5 seconds, and releasing it after the value 4500 has appeared, the hour meter starts counting again starting from the value of 4500 hours. Use this selection for example after replacing the lamp or changing the position of the hour counter and wanting to restore factory settings.

- "UP" means up: this option allows you to increase the position of the hour counter to the desired position.

This choice is confirmed by the fact that the setting of the user "UP" and the position of the hour meter alternate on the display. Then keep the switch (R) pressed for 5 seconds. After 5 seconds, only the message "UP" remains on the display. At this point, the switch must be released.

By briefly pressing the switch, the hour meter value can be increased in steps of 500 hours from 4500 hours to a maximum of 9999. The increased value alternates with the word "UP" on the display.

After selecting the desired position, wait 10 seconds. After 10 seconds, the selected position is displayed, and the timer starts counting down.

If an error is made while increasing the position of the hour counter, it is possible to reset the hour counter to the value of 4500 by holding the switch for 5 seconds. The hour counter value is reset to 4500 and a new value can be set.

- "dn" means down (down): this option allows you to reduce the position of the hour counter to the desired position.

This choice is confirmed by the fact that the setting of the user "dn" and the position of the hour meter alternate on the display. Then keep the switch (R) pressed for 5 seconds. After 5 seconds, only the message "dn" remains on the display. At this point, the switch must be released.

By briefly pressing the switch, the hour meter value can be reduced in steps of 500 hours from 4500 hours to a minimum of 0000. The reduced value alternates with the writing "dn" on the display.

After selecting the desired position, wait 10 seconds. After 10 seconds, the selected position is displayed, and the timer starts counting down.

If an error is made while reducing the position of the hour counter, it is possible to return the hour counter to the value of 4500 by holding the switch for 5 seconds. The hour counter value is reset to 4500 and a new value can be set.

The value indicates as follows that the lamp needs to be replaced:

- From position 0672; the display flashes once per second. The lamp needs to be replaced in 4 weeks.
- From position 0336; the display flashes once every half second; the lamp needs to be replaced in 2 weeks.
- From position 0168; the display flashes once every quarter of a second; the lamp needs to be replaced in 1 week.
- In position 0000 the digits flash rapidly and the hour counter stops counting down. The lamp needs to be replaced.
- 

### **Disassembly / Maintenance**

For maintenance / disassembly of the device, always turn off the power supply. The appliance must be cleaned twice a year. When algae growth and / or limescale deposits increase, the quartz glass tube (M) in which the lamp is inserted must be cleaned. The special lamp must be replaced after 9,000 hours of operation at the latest.

Clean the stainless steel interior with a soft brush.

1. Detach the tripartite joints (I) and let the water flow out of the appliance.
2. Unscrew the threaded gasket (N) and remove the lamp (K) from the lamp holder (L). Remove the lamp from the quartz glass and replace the special lamp (K) if necessary. Proceed gently, as these are very fragile components.
3. Gently disassemble the quartz glass (M) using a large flat screwdriver (see drawing 3). Don't force!
4. Clean the quartz glass with a suitable cleaner. Always use a soft cloth to clean the glass and avoid scratching it.
5. When mounting the quartz glass in the housing, make sure that the 3 seals (P) are positioned correctly, and gently slide the end of the quartz glass into the receptacle (Q) (see drawing 4) . Don't force!
6. Gently refit the lamp into the quartz glass and fit the lamp (K) into the lamp holder (L). Screw the threaded gasket (N) back onto the housing.
7. The electrical part of the appliance is located in the display cabinet (S) on the appliance. This display cabinet is glued and will not open. When replacing the electrical part or the display, it is necessary to unscrew the complete electrical cabinet and disconnect the appliance wires (see drawing 1). Unscrew the screw cap (N) and carefully remove the bulb holder from the lamp. Carefully store the various loose components of the ground connection, etc. These do not come with a new housing or a new electrical part. If in doubt about the connection, consult a recognized installer.
8. If you need to replace the housing, you must first disconnect the ground connection (J) and the electrical section with the display (S) from the housing (U) (see drawings 1 and 2). Unscrew the electrical section with the display (S) and the lamp holder from the housing. Carefully store the various loose components of the ground connection. These are not supplied with a new housing. Disassemble the lamp (K) and the quartz glass (M) from the housing to avoid damage during transport. If in doubt about the connection, consult a recognized installer.

**Technical specifications 75.000 L - 75 Watt**

- Philips TUV T5 75 Watt lamp
- UV-C emission (W) 25 Watt
- UV-C (%) after 4,500 hours 80%
- UV-C (%) after 9,000 hours 0%
- Pool capacity (L) 75,000 L
- Max flow. 25,000 l / h
- Max. Pressure 3 bar
- Max. 35 ° C
- Min. Temperature 0 ° C
- Connection Ø63mm / Ø50mm
- Length of the device 100cm

**Types of UV-C systems**

Item number: 1075096 75,000 L / 75 Watt UV-C Timer (230 V; 50/60 Hz)

**Lamps to replace**

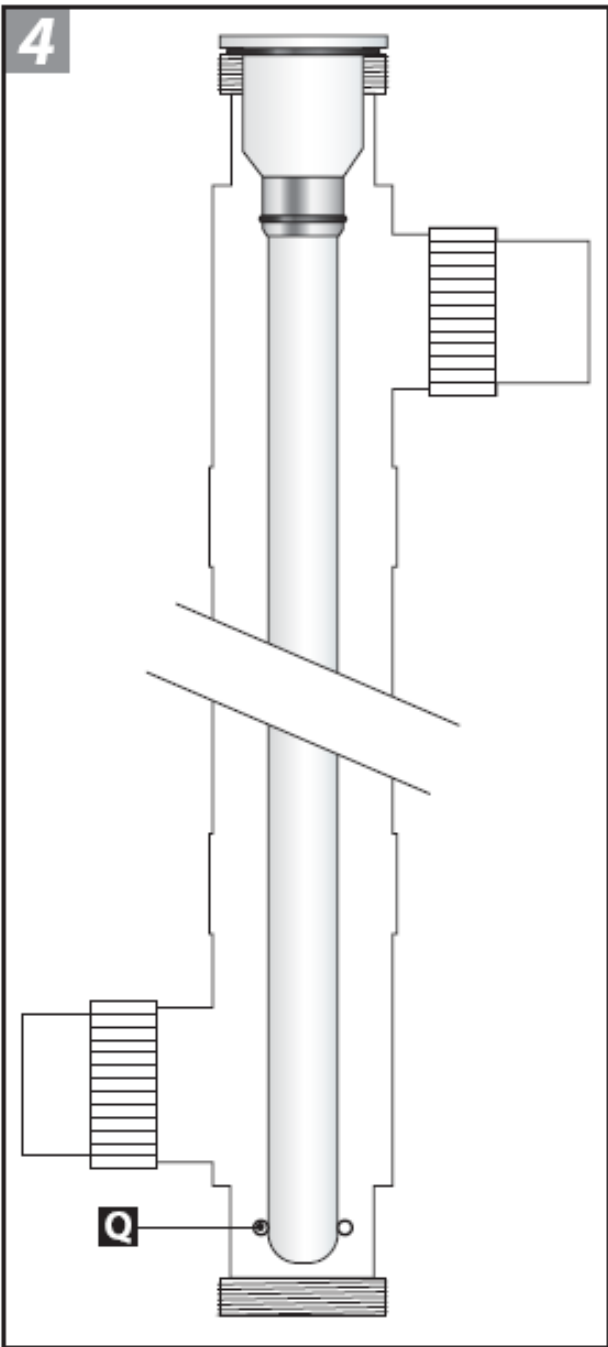
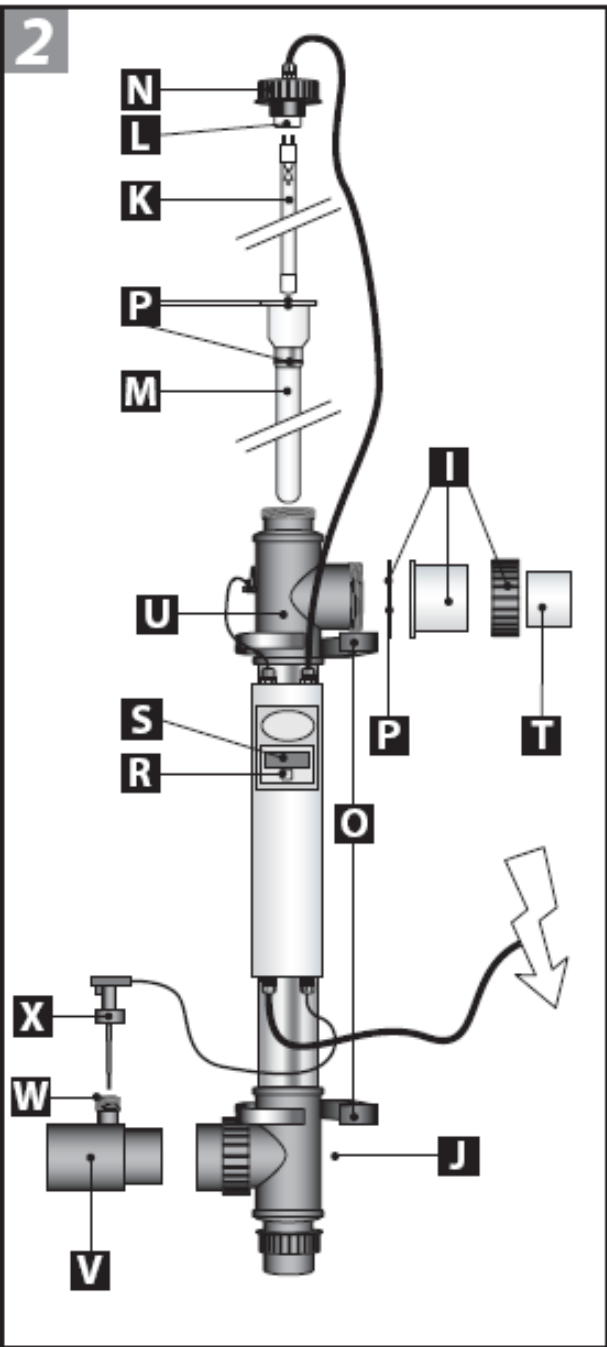
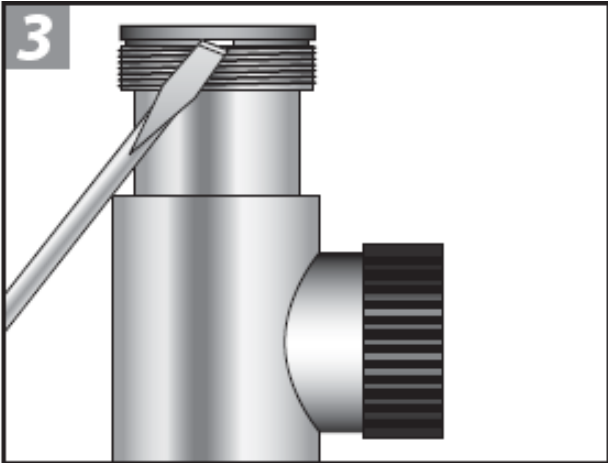
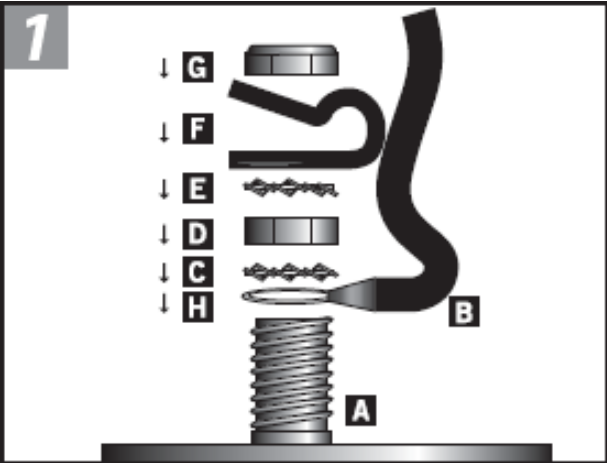
Item number: 1075098 Philips lamp type TUV 36T5 4P-SE (75 Watt)

**Warranty conditions**

The product is covered by a warranty on manufacturing defects for 24 months from the date of purchase. The lamp and the quartz glass are not covered by warranty. The warranty applies only on condition that the product is returned ex works together with valid proof of purchase. Warranty repairs must be carried out exclusively by the supplier.

No warranty is given for failures caused by installation or operation errors. Failures caused by insufficient maintenance are not covered by the warranty. The supplier declines all responsibility for damage caused by incorrect use of the product. The supplier cannot be held responsible for damage resulting from the failure of the appliance. Complaints based on damage during transport can only be accepted on condition that the damage has been ascertained or confirmed at the time of delivery by the carrier or postal delivery clerk. Only in this case is it possible to claim against the carrier or the postal service.

3. Technical assembly exploded view - cod. 1075097



#### 4. UVC Timer 130 W sterilizer - cod. 1075097

##### Functioning

The UV-C Timer device generates UV-C rays with a wavelength of 253.7 nm thanks to the special Philips UV lamp, which eliminates bacteria (including legionella). The Blue Lagoon UV-C Timer device ensures clean, fresh and transparent water in an efficient and ecological way. The water is transported through the UV-C device by means of a pump. UV-C radiation neutralizes bacteria, viruses and other primitive organisms, and stops them from multiplying. The Amalgaam lamp is not sensitive to the thermal fluctuations of water and provides a powerful constant radiation of UV-C at 50 Watts. The UV-C lamp is known to be the most powerful UV-C lamp available on the market. The Blue Lagoon UV-C Timer device is equipped with an integrated high-frequency electronic ballast. This ballast absorbs current variations, thus protecting the lamp. The device also includes an integrated hour meter, to keep an accurate count of the hours of operation. It lets you know exactly when the lamp needs to be replaced. The stainless steel interior provides an additional reflection of UV-C radiation, increasing the efficiency of the device by up to 35%. Thanks to the UV-C timer, the water will be disinfected safely and efficiently, while maintaining excellent quality. With universal connections. The device can be connected via a PVC pipe (Ø 50 and 63 mm).

##### Advantages of UV-C treatment:

- Keeps the water fresh, clean and transparent
- Disinfects water efficiently and safely
- UV-C rays break down chlorinated compounds
- Protects from bacterial strains when taking a bath
- Keeps the formation of mold, bacteria and algae under control
- It allows you to reduce the use of chlorine and other chemicals by up to 80%
- Prevents the smell of chlorine and irritation to the skin and eyes (redness)
- More ecological than traditional methods

##### Advantages of UV-C timer:

- Integrated electronic pre-activation device, for uniform feeding.
- Equipped with a flow switch that deactivates the appliance when it is crossed by water
- Up to 35% more UV-C yield thanks to reflection
- It delivers UV-C rays at 50 Watts
- Equipped with Philips UV-C lamp
- Integrated adjustable hour meter for the UV-C lamp
- Digital indication of when the lamp needs to be replaced
- 316L stainless steel housing
- Ease of installation and maintenance
- 2 year warranty on manufacturing defects
- Ground connection
- Adapters from 63 to 50 mm in diameter supplied

**Safety**

*This appliance produces harmful rays. Direct contact can pose a risk to eyes and skin. Check the operation of the lamp and UV-C exclusively through the transparent components of the unit.*

- Always insert the appliance plug into a socket with a flap.
- For a permanent connection to the electricity network, the requirements of the electricity company must be met. If in doubt about the connection, consult an authorized installer or the electricity company. Always use an earth leakage breaker.
- In case of use of substances for the treatment of water or medicines, the device must be deactivated.
- Before carrying out maintenance or repairs on the appliance, always remove the plug from the socket. Never insert or remove the plug from the socket with wet hands or when you are in a puddle.
- Never immerse the appliance in water.
- Never install the appliance in an area in full sun.
- Keep the appliance and the cable out of the reach of children.
- The cord of this appliance cannot be replaced. In the event of damage to the power cable, the complete electrical part of the appliance must be replaced. Never discard the plug, but leave the electrical section intact. The electrical section with the cut off plug is not covered by warranty.
- After the device is turned off, the lamp remains hot for about 10 minutes.
- Do not use the appliance in case of damage to the components (in particular to the quartz glass).
- If there is a risk of frost in the winter months, disassemble the appliance.
- The stainless steel housing of the appliance is not suitable for salt pools with a high salt content. If the salt content is excessive, the steel oxidizes and the housing is damaged. Always install the appliance immediately downstream of the filter.
- This product is to be used only in accordance with the guidelines given in this manual.

**Ground Connection Installation (Illustration 1)**

- 1.** Before mounting the plastic strain relief (F) on the grounding bolt (A), the cable (B) must be passed through the strain relief device (F). Mount the anti-traction device (F) about 10 cm away from the eyelet (H) of the ground connection cable (B).
- 2.** Arrange the eyelet (H) of the cable (B) on the ground connection bolt (A) fixed to the housing.
- 3.** Then mount a toothed washer (C), a hex nut (D) and another toothed washer (E) on the eye (H).
- 4.** Fix the anti-traction device (F) on it in order to create a slot of 5 cm in diameter.
- 5.** Finally, mount the lock nut (G) on the grounding bolt (A).
- 6.** After having mounted the various nuts in the right order on the grounding bolt (A), tighten them with an Allen key or hexagonal head number 8. Do not overtighten the nuts, as the anti-traction device can break. (The clear nut screwed onto the grounding bolt (A) has no function and can be thrown away.)

**Installing the appliance (Drawing 2)**

Never install the UV-C Timer directly downstream of the pH regulator or the pool salt electrolysis system. The best place to install the appliance is directly downstream of the filter. Never immerse this appliance in water. Always install the appliance outside the tank. Leave about 1 space to be able to disassemble the lamp (K) / quartz glass (M) for replacement and / or maintenance.

1. The appliance must always be fixed in a vertical position.
2. Unscrew the threaded gasket (N) from the housing (U). Extract the UV-C (K) lamp from the enclosure supplied (see packaging) and gently insert the lamp into the quartz glass (M). Gently connect the white lamp holder (L) to the UV-C lamp (K), then manually screw the threaded gasket (N) onto the housing (U).
3. The gluing base for the flow switch (V) must be glued with the thread (W) facing upwards on the tripartite joint (I) (see drawing 2). The gluing base (V) can be glued to the lower tripartite joint (I). Mount the flow switch (X) fixed to the electronic pre-activation device (S) straight on the thread (U) of the gluing base (V) (see drawing 2). If the flow switch is mounted in any other way, the appliance will not work. The arrow on the flow switch (X) must always be in the direction of the water flow. Otherwise, the Blue Lagoon UV-C Amalgaam lamp remains off.
4. Mount the supplied clamps (O) in a defined point, fix the unit to the pipe clamps and tighten the tripartite joint (I). Pay attention to the position of the gaskets (P) both at the connections and at the quartz glass (see drawing 2).
5. Mount the unit using the split joint (I) and the gluing base for the flow switch (V) in the circuit. The entrance and exit of the tripartite joint have a diameter of 63 mm. If the pipes have a diameter of less than 63 mm, the adapter (Ø 63 x Ø 50 mm) (T) can be used. It can be mounted in the tripartite joint (I) and in the gluing base for the flow switch (V). Inside the adapter (T) there is on one side a thread that allows you to mount any sleeve with sealing gasket (not supplied).
6. Operate the pump and check that the system does not have leaks and that the water flows without obstacles.
7. Insert the plug of the UV-C device into a wall socket with earth connection and equipped with an earth leakage switch.  
Check that the lamp is on through the transparent components of the luminaire. To deactivate the appliance, remove the plug from the socket.
8. If the appliance is not crossed by water, the flow switch is automatically deactivated. To deactivate the appliance permanently, remove the plug from the socket.

**Instructions for using the digital hour meter**

When the UV-C Timer is activated, the program automatically performs a test. The display automatically shows the following indications: 8888 (test display); r and software version number; 50H or 60H indication of the mains frequency. At this point, the display switches to hour counter mode. If the UV-C lamp is activated for the first time, or after using the "reset" function, the display shows the value 4500. Next to the rightmost digit on the display, a dot flashes once per second to indicate that the hour meter is running.

The display is automatically set to the factory set value of 4500 hours. Up to 4500 hours, the UV-C lamp provides 100% radiation effectiveness. After 4500 the radiation becomes less intense and may be insufficient for the desired result. If the UV-C lamp has been in use for a long time and has already been activated previously, after activation, the display shows the value indicated before deactivating the UV-C lamp. If the hour meter value has been increased or reduced by the user, the last hour meter position shown on the display before deactivation is displayed.

If desired, the hour counter settings can be changed. To do this, proceed as follows:

After holding the switch (R) under the display for 5 seconds, the word "rSt" appears on it, indicating that the user menu has been selected. After releasing the switch (R), the position of the hour counter and the word "rSt" alternate on the display. By briefly pressing the switch, the possibilities offered by the menu are displayed. The menu offers 3 adjustment possibilities: "rSt" "UP" and "dn".

- "rSt" means reset: it is happy to restore the hour counter to the factory setting of 4500 hours. This choice is confirmed by the fact that the position of the hour counter and the message "rSt" alternate on the display. By keeping the switch (R) pressed for 5 seconds, and releasing it after the value 4500 has appeared, the hour meter starts counting again starting from the value of 4500 hours. Use this selection for example after replacing the lamp or changing the position of the hour counter and wanting to restore factory settings.

- "UP" means up: this option allows you to increase the position of the hour counter to the desired position. This choice is confirmed by the fact that the setting of the user "UP" and the position of the hour meter alternate on the display. Then keep the switch (R) pressed for 5 seconds. After 5 seconds, only the message "UP" remains on the display. At this point, the switch must be released. By briefly pressing the switch, the hour meter value can be increased in steps of 500 hours from 4500 hours to a maximum of 9999. The increased value alternates with the word "UP" on the display. After selecting the desired position, wait 10 seconds. After 10 seconds, the selected position is displayed, and the timer starts counting down.

If an error is made while increasing the position of the hour counter, it is possible to reset the hour counter to the value of 4500 by holding the switch for 5 seconds. The hour counter value is reset to 4500 and a new value can be set.

- "dn" means down (down): this option allows you to reduce the position of the hour counter to the desired position.

This choice is confirmed by the fact that the setting of the user "dn" and the position of the hour meter alternate on the display. Then keep the switch (R) pressed for 5 seconds. After 5 seconds, only the message "dn" remains on the display. At this point, the switch must be released.

By briefly pressing the switch, the hour meter value can be reduced in steps of 500 hours from 4500 hours to a minimum of 0000. The reduced value alternates with the writing "dn" on the display.

After selecting the desired position, wait 10 seconds. After 10 seconds, the selected position is displayed, and the timer starts counting down.

If an error is made while reducing the position of the hour counter, it is possible to return the hour counter to the value of 4500 by holding the switch for 5 seconds. The hour counter value is reset to 4500 and a new value can be set.

The value indicates as follows that the lamp needs to be replaced:

- From position 0672; the display flashes once per second. The lamp needs to be replaced in 4 weeks.
- From position 0336; the display flashes once every half second; the lamp needs to be replaced in 2 weeks.
- From position 0168; the display flashes once every quarter of a second; the lamp needs to be replaced in 1 week.
- In position 0000 the digits flash rapidly and the hour counter stops counting down. The lamp needs to be replaced.

**Disassembly / Maintenance**

For maintenance / disassembly of the device, always turn off the power supply.

The appliance must be cleaned twice a year. When algae growth and / or limescale deposits increase, the quartz glass tube (M) in which the lamp is inserted must be cleaned. The special lamp must be replaced after 4,500 hours of operation at the latest.

Clean the stainless steel interior with a soft brush.

1. Detach the tripartite joints (I) and let the water flow out of the appliance.
2. Unscrew the threaded gasket (N) and remove the lamp (K) from the lamp holder (L). Remove the lamp from the quartz glass and replace the special lamp (K) if necessary. Proceed gently, as these are very fragile components.
3. Gently disassemble the quartz glass (M) using a large flat screwdriver (see drawing 3). Don't force!
4. Clean the quartz glass with a suitable cleaner. Always use a soft cloth to clean the glass and avoid scratching it.
5. When mounting the quartz glass in the housing, make sure that the 3 seals (P) are positioned correctly, and gently slide the end of the quartz glass into the receptacle (Q) (see drawing 4) . Don't force!
6. Gently refit the lamp into the quartz glass and fit the lamp (K) into the lamp holder (L). Screw the threaded gasket (N) back onto the housing.
7. The electrical part of the appliance is located in the display cabinet (S) on the appliance. This display cabinet is glued and will not open. When replacing the electrical part or the display, it is necessary to unscrew the complete electrical cabinet and disconnect the appliance wires (see drawing 1). Unscrew the screw cap (N) and carefully remove the bulb holder from the lamp. Carefully store the various loose components of the ground connection, etc. These do not come with a new housing or a new electrical part.  
If in doubt about the connection, consult a recognized installer.
8. If you need to replace the housing, you must first disconnect the ground connection (J) and the electrical section with the display (S) from the housing (U) (see drawings 1 and 2). Unscrew the electrical section with the display (S) and the lamp holder from the housing.  
Carefully store the various loose components of the ground connection. These are not supplied with a new housing. Disassemble the lamp (K) and the quartz glass (M) from the housing to avoid damage during transport.  
If in doubt about the connection, consult a recognized installer.
9. Detach the flow switch from the gluing base. Unscrew the tripartite joints and remove the housing from the terminals.

**Technical specifications**

- Philips TUV T5 130 Watt lamp
- UV-C emission (W) 50 Watt
- UV-C (%) after 4,500 hours 85%
- Capacity of the pool (L) 150,000 L
- Max flow. 30,000 l / h
- Max. Pressure 3 bar
- Connection Ø63mm
- Length of the device 100cm

**Types of UV-C systems**

Item number: 1075097 150,000 L / 130 Watt UV-C Timer (230 V; 50/60 Hz)

**Lamps to replace**

Item number: 1075095 Lamp type TUV 130 Watt 4P-SE Amalgam (130 Watt)

**Warranty conditions**

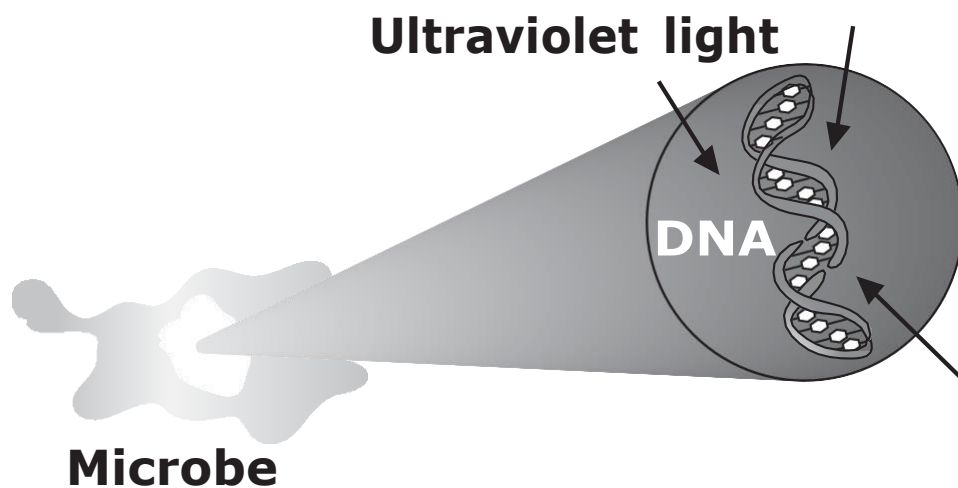
By purchasing this product, you have made an excellent choice. The device is assembled with care and in compliance with all safety requirements. To ensure its quality, the supplier has used only superior materials. The device is guaranteed by the supplier for 2 years from the date of purchase for material and manufacturing defects. The lamp and the quartz glass are not covered by warranty. The warranty applies only on condition that the product is returned ex works together with valid proof of purchase.

Warranty repairs must be carried out exclusively by the supplier.

No warranty is given for failures caused by installation or operation errors. Failures caused by insufficient maintenance are not covered by the warranty. The supplier declines all responsibility for damage caused by incorrect use of the product. The supplier cannot be held responsible for damage resulting from the failure of the appliance. Complaints based on damage during transport can only be accepted on condition that the damage has been ascertained or confirmed at the time of delivery by the carrier or postal delivery clerk. Only in this case is it possible to claim against the carrier or the postal service.

**Note**

- The information contained in this document may vary at the discretion of the editor, without notice, together with the changes to the product in question in this document: it will be the responsibility of the customer to verify the persistent correspondence of the product to the information sheet when placing the order.
- Any technical diagrams reproduced in this document have a purely informative value and are not valid for regulatory purposes



## How UV-C works

### The molecular structure of the DNA is broken down rendering the microbe harmless

#### Recycling informatie

Het symbool van de afvalbak op dit product geeft aan dat het product (als het niet meer wordt gebruikt) niet met het reguliere vuilnis mag worden aangeboden, maar dat het op de speciaal hiervoor ingerichte collectiepunten moet worden aangeboden voor recycling. Als alternatief kunt u het product ook aanbieden op het adres waar het is gekocht op het moment dat u een nieuw product koopt. Maar dit mag alleen op basis van 1 op 1. Een gescheiden afvalcollectie is beter voor het milieu en het helpt om door recycling de grondstoffen weer opnieuw te gebruiken. Elke andere manier van afval- verwerking met betrekking op dit product is strafbaar.

NL



#### Information de recyclage

Le symbole du container barre sur le produit veut dire que le appareil doit être recycle separé. Le usager, a la fin du vie de le appareil, doit ramene le appareil a un centre de recyclage des appareils électrique. Une alternative est de le ramene a le vendeur sur le moment de une achat de une nouvelle produit, sur le base 1 sur 1. Une recyclage alternative est tres saine pour le environnement, et aide a une recyclage de materiel, une autre methode de jete le appareil est illegal, et sera puni par la loi.

F

#### Informationen das Recyclage

Das Kennzeichen auf die Packung bedeutet dass es getrennt, von normales Müll gesammelt werden muss, wenn das Gerät nicht mehr nutzbar ist. Wenn das Produkt kaputt ist soll der Besitzer es zu ein Sammelpunkt für elektrische Haushaltgeräte bringen. Oder wenn der Besitzer ein neues Gerät kaufen möchte kann Er/Sie das alte Gerät beim Verkäufer hinterlassen, nur 1 um 1 austauschbar. Getrenntes sammlung ist Umwelt freundlich und hilft dazu die alte Materialien neu nutzbar zu machen. Jeder andere / sonstige weise von sammeln ist nicht rechtsgültig.

D

#### Recycle information

The symbol of the barred bin printed on the product means that it must be collected separately from other rubbish when it will not be anymore in use. The user, at the end of the life of the product, will have to bring it to a proper rubbish collection centre for electric and electrical devices. Alternatively he can return the used product to the seller at the moment he buys a new unit, but only in proportion 1 to 1. A differentiated refuse collection is environmentally friendly and it helps the recycle of the materials, any other collection procedure is unlawful and will be subject to the law in force.

GB

**CE**  
Made in the  
Netherlands

