

CONTROL PANEL CON 1/ COL 2

MOUNTING

The control panel is splash proof , but should be mounted around the sauna room in a dry place as far as possible. The thermostat sensor must be wall mounted with the sauna. Please follow the measurements in the sauna stove instructions to avoid the possibility of scorching the wood. Please refer the belowing form.

Control Systems and Technical Specifications

MODEL	CON1	COL2
Phase	1/3	3
Volt	230/400	400
Timer	8h+4h	8h+4h
KW	3-9kw	10.5-18kw

THE TIMER (See fig. 1)

The timer, which is the main power switch of the sauna unit, automatically shuts off the unit at the desired time.

1. 8+4 hour pre-selection timer settings

Set switch to A

The pre-selector timer allows between 1 and 8 hours presenting, and the maximum running time is always 4 hours.

The pre-selector timer may be used to set in advances the time when the sauna is start if you want to use the sauna *at once* the switch is set anywhere between 1 and 4 hours, and the unit is on.

2. 12 hours pre-selector timer settings

Set switch to B.

The pre-selector timer is 0 hours presetting, and the maximum, running time is always 12 hours.

REGULATION OF TEMPERATURE (See fig. 1)

The thermostat control (1) regulates temperature. Turn clockwise to achieve stepless increase of temperature level in the sauna. Resetting the thermostat each time the sauna is used is unnecessary. When the position which maintains the desired temperature has been found, the knob may be permanently left at this setting.

SENSOR UNIT (See fig. 2)

The recommended mounting dimensions for the sensor are shown in the heater instructions. A3 metre length of heat-resistant cable (170c) 4 x 0.5mm is provided. This may be extended with normal low voltage cable Outside the sauna cabin. Connection details for the sensor are shown in fig.2 , 3 , 5.

LIMIT CONTROL

If the temperature in the sauna should rise too high (for example due to a thermostat fault) the limit switch in the sensor will turn off the power. When the fault has been rectified the switch may be reset.

(See the fig. 2)

CONTROL POWER WIRING

Control power input, output, light in the sauna room and thermostat sensor connection, please see the diagram 5.

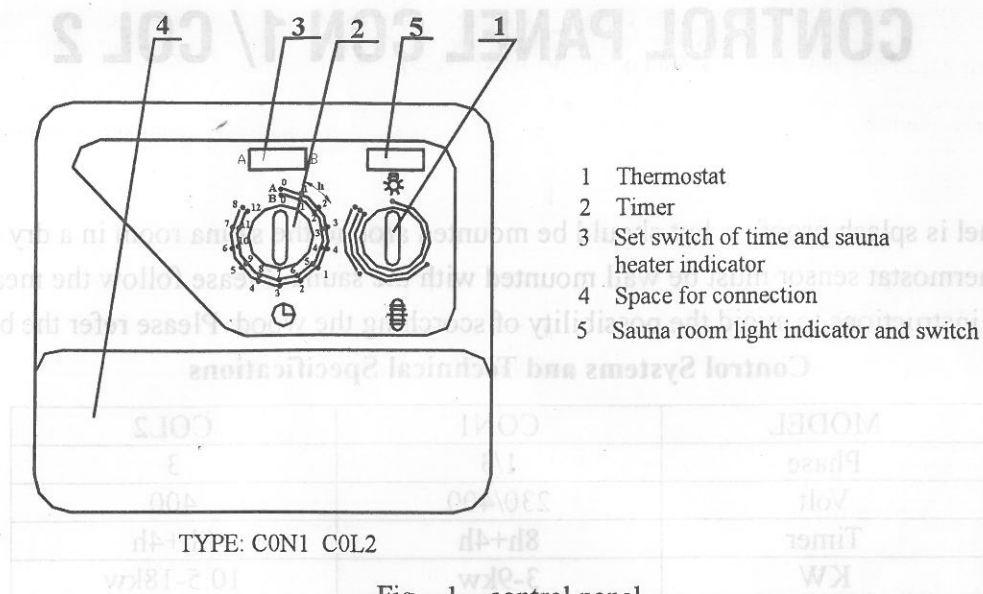


Fig. 1 control panel

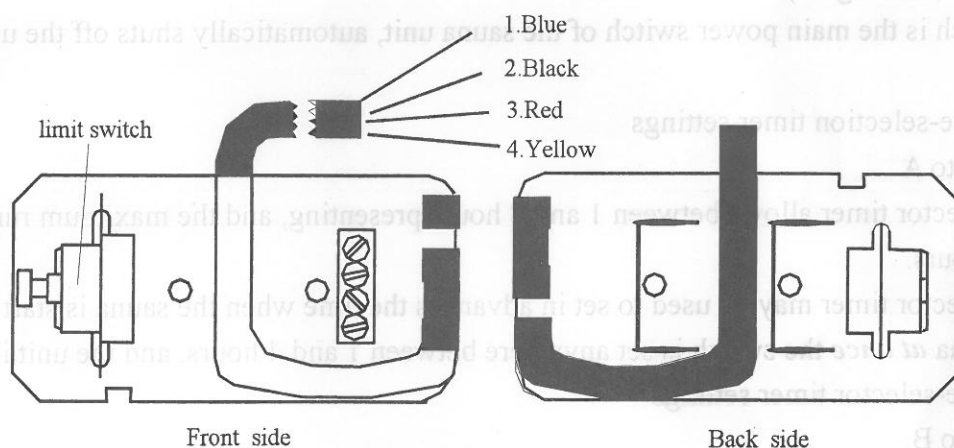


Fig. 2 Thermostat sensor

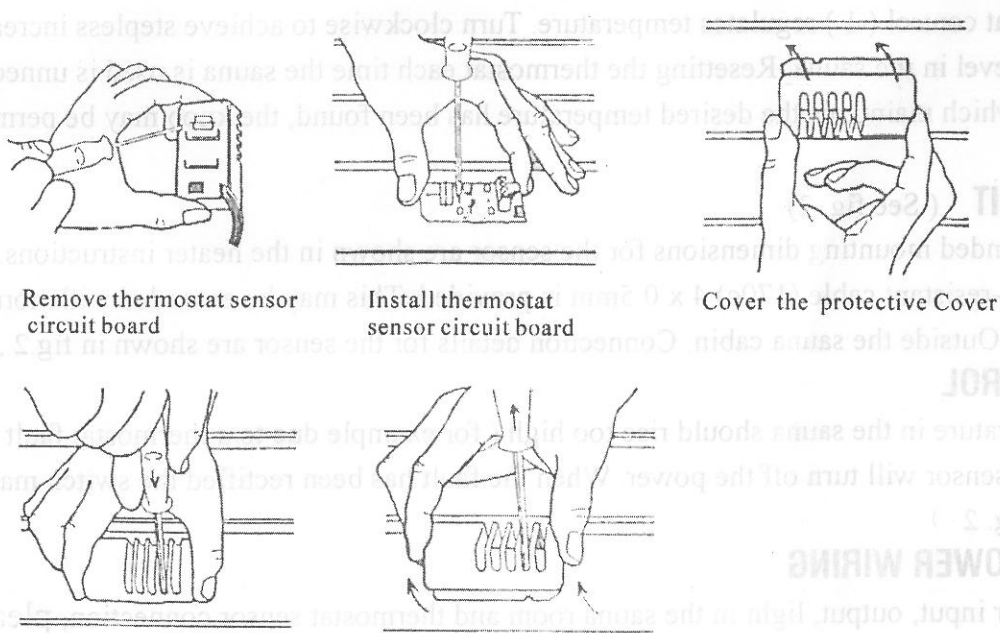


Fig. 3 Installation thermostat sensor

The sensor must be installed as shown in the illustration below. Digression from these instructions may cause overheating and risk for fire. (see fig 4 and form 1, 2)

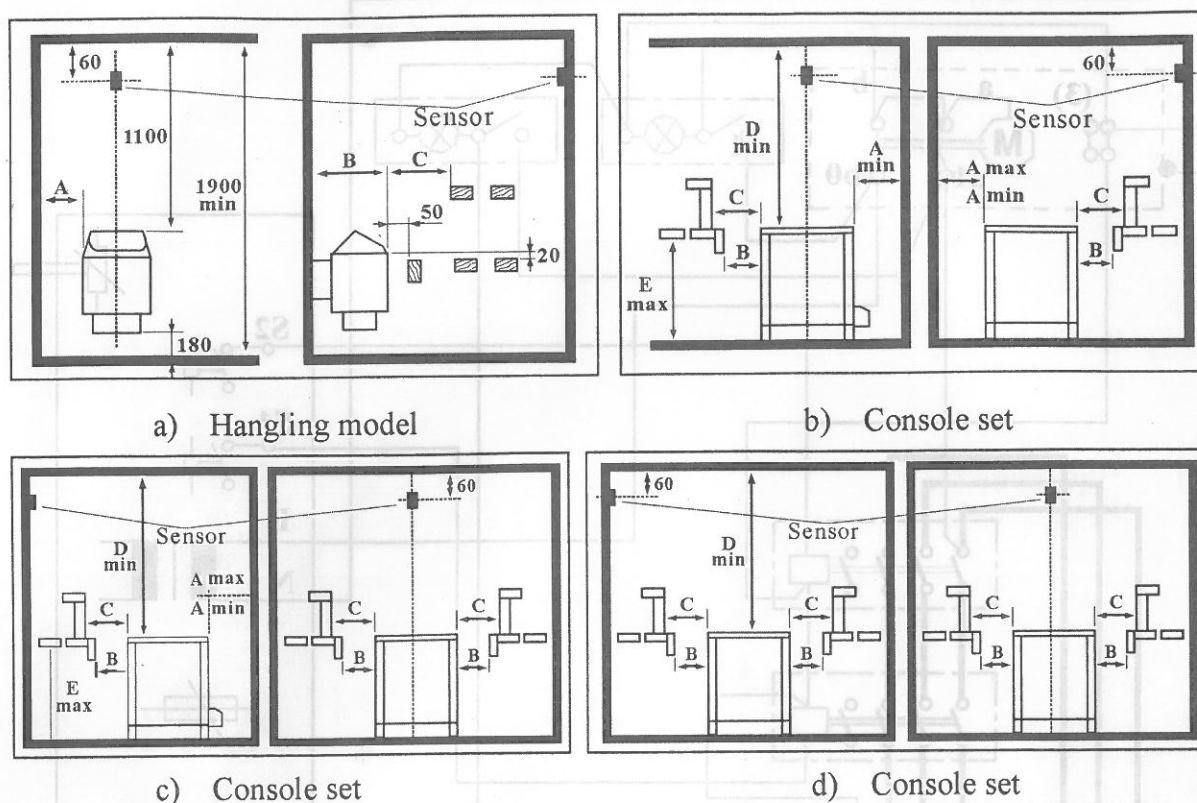


Fig. 4 Thermostat sensor installation location

Form 1 Hanging model

Heater	Output KW	Distances (mm)		
		A min	B min	C min
AM30MI	3.0	50	280	100
AM45MI	4.5	80	280	100
AM60MI	6.0	100	280	150
AM80MI	8.0	130	300	200
AM90MI	9.0	130	300	200

Form 2 Console set

Heater	Output KW	Distances (mm)					
		A min	A max	B min	C min	D min	E max
AM105B	10.5	180	300	100	150	1400	680
AM120B	12.0	180	300	100	150	1400	680
AM150B	15.0	200	320	100	150	1400	680
AM180B	18.0	200	320	100	150	1400	680

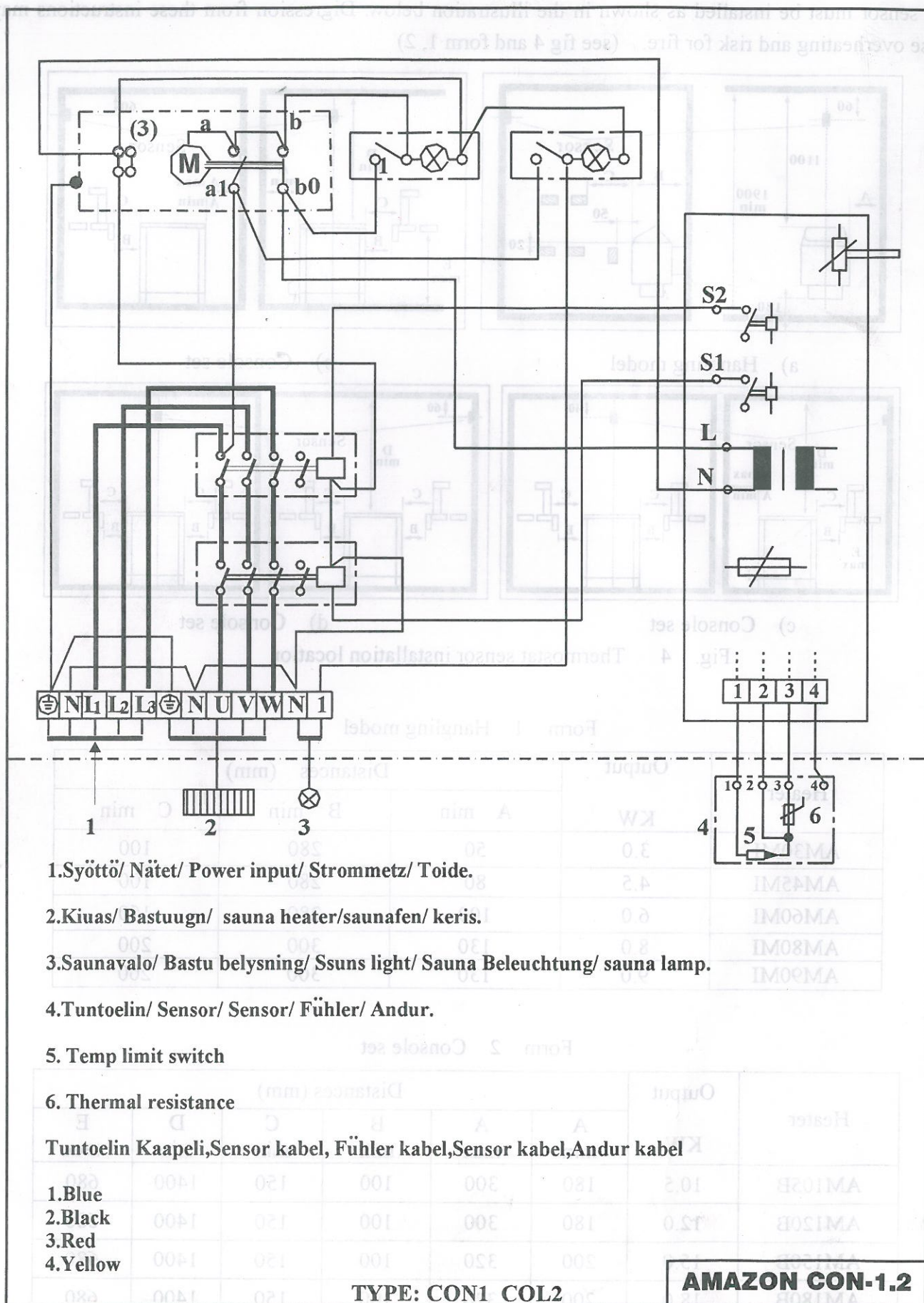


Fig. 5 Control circuit diagram